



# Zigbee Sensor

User Manual



Please read this manual carefully before use and keep it for future reference.

## SPECIFICATIONS

**Input voltage:**

AAA1.5V x2

**Static current:**

$\leq 5\mu\text{A}$

**Alarm current:**

$\leq 150\text{mA}$

**Low-Voltage indication:**

$\leq 2.4\text{V}$

**WIFI:**

802.11 b/g/n

**Installation:**

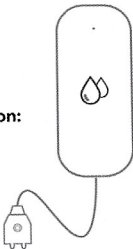
Wall-mounted

**Working Temperature:**

$-10^{\circ}\text{C} \sim +50^{\circ}\text{C}$

**Working Humidity:**

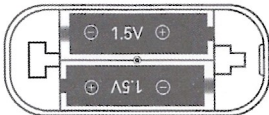
95%RH



## HOW TO USE

1. Push the mounting bracket upward and take out the bracket, then insert the battery.

2. Put the battery into the battery bin and place it according to the graphics in the battery bin. After two batteries are loaded, the indicator lights are always on and then off.



### 3.Prerequisite

Operational and compatible Zigbee Smart Gateway Setup.

#### Zigbee Smart Gateway

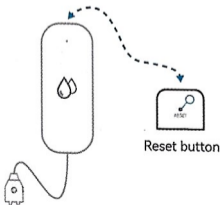
Open Smart Life app and tap the Zigbee Gateway. Tap Add sub-device and select Flood Detector or other sensors. Follow on-screen instructions to continue.



4.Ensure your mobile phone is connected to the Wi-Fi network and the detector is as close to the Zigbee Smart Gateway as possible.

Press the button of water sensor and then the LED indicator will flash rapidly, then will come to the automatic network connection mode.

## RESET





iOS / Android

Download the Smart Life APP in AP store  
or Play Store or scan the above  
QR code on Google